



## THE STATE *of* THE PAPER

After 3 issues, whats next for Leapfrog student newspaper? Read on page 3.

### NEWS / STUDENT GOVERNMENT

## SAB members explore charter amendments

Proposed amendments would create student senate, role of Secretary, yearly charter review; transition to ranked choice voting, mandate accessibility training

By **Blaise Paine, F23**  
*Editor-in-chief*

Members of the Student Advocacy Board have been exploring potential amendments to the SAB charter over the past month, with changes both big and small.

Race & Ethnicity Representative, Cherish McNeil, F21, proposed a yearly charter review committee, which would involve several non-SAB students and produce proposed amendments to the charter.

Treasurer Raymond Kasei, F23, proposed adding a mission statement to the charter to guide the SAB's actions.

Affinity Group Representative Kenine Dieuveuil, F21's proposals focused on accessibility, suggesting mandated accessibility training for all SAB members and accessibility audits for SAB events.

Queer Representative Blaise Paine, F23, proposed holding SAB elections using ranked-choice voting and creating the role of SAB Secretary, which would be in charge of running meetings and assembling agendas, tasks that have so far been conducted by Communications and Marketing Manager, Ceonni Dunn, F22.

But the most dramatic proposals come from Transfer Student Representative, Libby Harrity, F23. Harrity's proposals would create a Student Senate as a legislative branch to the student government, as well as a judicial branch called the Peer Justice Panel, a name suggested by Representative McNeil.

CONTINUED ON PAGE 2

### NEWS / ADMIN

## Board of Trustees members to visit campus

By **Blaise Paine, F23**  
*Editor-in-chief*

The Hampshire College Board of Trustees is meeting on campus this weekend, coinciding with Friends and Family Weekend.

The Board of Trustees governs Hampshire College, and are responsible for approving the budget and developing the school's policies. Among its voting members are a student trustee, Jess Lin Jimenez, F21; a faculty trustee, Professor of Music Becky Miller; and a staff trustee, Director of Advancement Services, Renee Sweeney.

While they are on campus for their meeting, they have two pre-arranged appearances where members of the campus community can come and talk with them.

On Friday, October 18<sup>th</sup>, from noon to 1pm, the trustees will be at the Dining Commons eating lunch. Later on Friday, from 4pm to 6pm, the trustees will be under the Solar Canopy with snacks and refreshments to mingle with students and their families.

Trustees largely live away from Hampshire and work day jobs, on top of their duties as trustees, so this is important to make student voices heard.

### NEWS / COVID

## COVID Weather Report #4

By **Blaise Paine, F23**  
*Editor-in-chief*

Per the latest data from the CDC at the time of publishing, the **Wastewater Viral Activity Level** in Massachusetts is **High**, which is down from two weeks ago when it was Very High, and it **continues to trend down**. According to the CDC's predictive model, **cases are declining** in Massachusetts.

However, **another wave is likely in mid-October, and may have already begun**. This is corroborated by the Pandemic Mitigation Collaborative. Every year since the beginning of the pandemic experienced a winter wave starting in mid-October after a brief lull.

According to the CDC's Nowcast model, the **dominant variant** is the Omicron-descended **KP3.1.1** at 57.2%. This is a new data source from previous Weather Reports.

**Pfizer vaccines are available through Hampshire Health Services**, although you must call ahead for an appointment and they are only available on Tuesday. Schedule an appointment at (413) 559-5458. Thank you to the COVID Action Coalition for bringing this to Leapfrog's attention. **Vaccines remain available through CVS, as well.**

**Free COVID antigen tests** remain available to order from the federal government at **COVIDTests.gov**. Students are eligible to receive 4 tests.

Leapfrog  
Reader  
Survey

Help Leapfrog improve by offering your thoughts and input on the paper. Your feedback is vital for developing the paper to be the most useful campus resource it can be.



“ Love doesn't just sit there, like a stone, it has to be made, ”  
like bread; remade all the time, made new.

— Ursula K. Le Guin, *The Lathe of Heaven*

# leapfrog

student newspaper

"All the news that's fit to ribbit!"

## leapfrog is...

### Editor-in-chief

Blaise Paine, F23  
bfp23@hampshire.edu

### Contributors

Adonis, F23  
ad23@hampshire.edu

Kenzie Doherty, S23  
mmd23@hampshire.edu

Alex Grosman, F22  
ag22@hampshire.edu

Jamie Gill, F23  
jcg23@hampshire.edu

Malfoy Kimmel, F22  
mak22@hampshire.edu

Ryan Nivus, F23  
corn23@hampshire.edu

Calvin Bailey Scott, F24  
wb24@hampshire.edu

## And for this issue...

### Guests

Sustainable Hampshire  
asr23@hampshire.edu

**ADVERTISING** Advertising is free for members of the 5 College community. Other individuals and organizations can inquire for pricing. The deadline for submissions is 5pm on the Tuesday before the issue is released.

Visit [hampshireleapfrog.org/](http://hampshireleapfrog.org/) advertising for more information. Leapfrog reserves the right to refuse submissions.

**SUBSCRIPTIONS** Leapfrog is a biweekly publication that prints throughout the academic year. To join our mailing list or subscribe to print delivery, visit: [hampshireleapfrog.org](http://hampshireleapfrog.org).

One copy per person; additional copies may be requested at-cost at [bfp23@hampshire.edu](mailto:bfp23@hampshire.edu)

Leapfrog 1.4, print run #1  
Copy \_\_\_\_\_ / 170

© 2024 Leapfrog Student Newspaper  
All rights reserved

# New College-inspired changes introduced in the Student Advocacy Board

Continued from Page 1

As initially proposed by Harry, the Student Senate would be a legislative branch to the student government, where-in every Hampshire College student is a voting member, capable of introducing motions and voting on them with an equal voice. The present SAB would then become the executive branch, tasked with enacting the will of the student senate. Notably, the student body would have the power to impeach SAB members.

The Peer Justice Panel would be a judicial branch, tasked with settling disputes regarding violations of the SAB charter, statutes, or other regulation; settling disputes over the allocation of SAF funds; hear impeachment hearings of SAB members; and ensure the smooth operation of student-body elections. Additionally, it would hear disputes between students, which could involve subsuming part or all of the current functions of the Community Standards Review Board.

These proposals draw from the constitution of the New College Student Alliance, the student government of the New College of Florida, a similar alternative liberal arts college. Harry transferred to

Hampshire from New College, where they were the Senate President, last fall, along with 34 others after it was taken over by right-wing extremists.

While Harry's particular amendments have not yet been presented at an SAB Meeting due to the SAB taking a recess for October break, Harry introduced the idea of integrating parts of the NCSA's constitution into Hampshire's student government several weeks ago, and the idea was met with significant interest, as well as some apprehension.

For any of these changes to be made to the charter, the SAB will first have to develop specific amendments to enact the changes, and then each amendment would have pass a 2/3rds majority vote inside the SAB. Once passed, the amendment would then be presented to the student body, who can ratify it with a 2/3rds majority of voters.

Discussions about the charter are on-going, and students are invited to attend SAB meetings every Tuesday at 7pm in Kern 108.

**DISCLOSURE:**

The author of this article is the Queer Representative on the Student Advocacy Board, and is involved in developing many of the amendments discussed.

## NOTICES

- The Bridge Café will be closed this evening, 10/18.
- The HampStore will be closed on Monday, November 11<sup>th</sup>, in observance of Veterans Day.
- Until further notice, Duplications will be opening at noon on Tuesdays.
- The New Playwrights Festival has been canceled.

• SAB Transfer Student Representative, Libby Harry, F23, is conducting a survey of transfer student concerns. Scan the QR code at right.



• The Spiritual Life Center is conducting a survey to guide the center's efforts. Scan the QR code at right.



**AD** Mythos Wants You!  
 Oct 19th  Oct 26th  
 Go larp with us  
 2pm-8pm at EDH  
 Taken out by Mythos

## Corrections & Updates

In the article "Theatre Board election results" from *Leapfrog 1.3*, we failed to include the name of the Community Outreach Coordinator, due to a delay in ensuring the information was accurate. The Theatre Board's Community Outreach Coordinator is Breanna Hines, F24.

Additionally, we should have included a disclosure on the article noting that Ryan Nivus, F23, is a contributor to Leapfrog, as well as being the Apprentice Budget Coordinator.

\*\*\*

For the article "Campus Safety & Wellbeing publishes

on-campus crime report" from *Leapfrog 1.3*, we reached out to CSW to comment on school policy regarding the involvement of law enforcement in drug and alcohol violations.

While CSW did not reply in time for publishing, it has since replied, saying the following:

"For the 2023 Clery report, none of the violations related to liquor law and drug law were severe enough to necessitate arrest. The College manages follow-up conversations and accountability measures through the community standards process rather than carceral law enforcement

methods that criminalize a student for certain violations."

\*\*\*

For the crossword puzzle from *Leapfrog 1.3*, the clue for 59-Down was incorrect, and should have been "The DC's old name.", clueing "SAGA" instead of "SAGE."

*Leapfrog welcomes comments, concerns, and suggestions, as well as information about errors that call for correction. Please email the editor, Blaise Paine, at [bfp23@hampshire.edu](mailto:bfp23@hampshire.edu).*

*Corrections will always be printed on this page.*

# THE STATE of THE PAPER

Leapfrog has now been in operation for over a month, and has published 45 + 0 articles, 2 cross-words, 2 sudokus, and 2 comics from 8 authors across 4 issues and 489 copies. Here's how Leapfrog is growing and changing to be the best student newspaper it can be.

October 18, 2024 **3**  
hampshireleapfrog.org

By **Blaise Paine, F23**  
Editor-in-chief

## Leapfrog goes online @ hampshireleapfrog.org

Leapfrog now has its very own website!

Accessible at hampshireleapfrog.org, the website finally makes the staff list, advertising information, ethics guidelines, mission statement, and past issues accessible, all in one place. In the future, the website will also hold articles, corrections, comics, and interactive puzzles, all easily shareable with a link.

Additionally, Leapfrog now has an Instagram account, @hampshireleapfrog. Important information, like corrections, calls for comment and submissions, as well as a link to every issue will be posted there for maximum shareability.



The Leapfrog website on 10/15/24

### What's online?

- Our Mission Statement
- Print delivery and mailing list sign-up
- Advertising information
- Staff list and biographies
- The Leapfrog ethics guidelines
- A complete digital archive of every print issue!

### What's to come?

- Individual articles
- Interactive puzzles

## Physical & Digital Delivery

Starting with next issue, #5, Leapfrog will deliver physical copies to your mod, mailbox, or office, and/or digital copies to your email inbox, all for free. To sign up, scan the QR code at right.



## Leapfrog Financial Report

After three issues and launching a website, Leapfrog has managed to keep its total lifetime expenses under \$100. Not including expenses for this issue, Leapfrog has spent \$95.65.

\$83.79 was spent on printing, making up the vast majority of expenses at 87.6%. The remaining \$11.86, or 12.4% of the total, was spent on website costs, including an upfront payment of \$6.86 for the domain name, and \$5 for web-hosting.

The domain name will have to be renewed for ~\$10 every calendar year, and the web-hosting will be a \$5 monthly expense.

Not included here are expenses related to the distribution of paper, most notably, paperclips, rubber bands, and index cards. Going forward, these expenses will be tracked more rigorously, as

Aside from website expenses, future anticipated expenses are primarily related to paper delivery and distribution expansion: paper clips, rubber bands, index cards, bags for newspaper delivery, raw materials for distribution boxes, etc.

Funding thus far has come from founder and editor-in-chief, Blaise Paine, F23, as well as a one-time donation to Issue 3 printing expenses from Raymond Kasei, F23.

As Leapfrog becomes an officially recognized student group, it will also become a beneficiary of the Student Activities Fund, which is paid for by every student at Hampshire College. With that, Leapfrog assumes a fiduciary duty to the student body of Hampshire College, and an obligation to be as transparent as possible with its financial dealings.

To that end, over the course of the coming weeks, Leapfrog will make financial documents available online, and establish bylaws to ensure the regular publication of financial reports like this one.

Expenses	
Issue 1 Costs:	\$15.75
Issue 2 Costs:	\$26.04
Issue 3 Costs:	\$42.00
Website Costs:	\$11.86
<b>Total Costs:</b>	<b>\$95.65</b>
Funding	
Blaise Paine:	\$81.65
Raymond Kasei:	\$14.00
All figures as of 10/15/24	

## Expanding distribution

Leapfrog has so far been available in the Dining Commons, the mail room, the Airport Lounge, the bench between the library and the APL, the QCAC, the CFF, the Kern, and Emily Dickinson Hall.

Starting with this issue, Leapfrog will also be available at Mixed Nuts and the Bridge Café.

Mixed Nuts will be the first location to receive a snazzy green distribution box, marking where Leapfrog can be found.

The Reader Survey will be collecting opinions on other places the paper could be distributed to expand there in the future, and we've also been collecting data on how popular each distribution location is, and will adjust circulation accordingly.

In the near future, Leapfrog will transition to printing through Duplications, which will hopefully be cheaper and less labor intensive, as well as looking better.

## Becoming an official group

Leapfrog was submitted to Student Engagement for consideration as a formally recognized student group on October 11<sup>th</sup>, with founder and editor-in-chief, Blaise Paine, F23, as first signer, writer and illustrator of *Dirk St. Antique & Nemo the Sheep*, Ryan Nivus, F23, as second signer, and contributor Kenzie Doherty, S23, as third signer.


Recognition as an official student group will hopefully aid in expanding the writing staff of the paper by being listed on HampEngage, secure funding

from the Student Activities Fund for printing the paper, ensure the longevity of the paper for years to come, and bring legitimacy that will hopefully help the paper establish a permanent presence on campus.


Going forward, Leapfrog will establish formal bylaws and policies to govern the operation of the paper and ensure its accountability to the student body.

These bylaws and policies will cover matters like the election of the paper's staff, financial transparency, and editorial guidelines.

**AD**  
**MONDAY'S FROM 8-10 PM**



**SCAN TO LISTEN**



**SAY LESS!**  
 WITH **CHERISH MCNEIL**  
 Taken out by Cherish McNeil, F21

NEWS / THEATRE

# Unslotted production of A Midsummer Night's Dream in search of production team

An unslotted production of Shakespeare's comedy, *A Midsummer Night's Dream*, directed by Leo Vargha, F23, and stage managed by Schuyler Durand, F23, is searching for a Props Designer, Lighting Designer, Set Designer, Costume Designer, Stage Manager, and Assistant Stage Manager.

out the form at the QR code below.



The production plans to begin design work in December, and perform in mid-April next semester.

Questions can be sent to Vargha at sev23@hampshire.edu or Durand at scdd23@hampshire.edu.

Interested students can fill

NEWS / CAMPUS

# HampStore Student Design voting open till October 20th

Candidate designs come from students Ashley Barrondo, F22; Henry Simpson, F23; Fernanda Amagasaki, F22; and Marinah Chavez, F22

moon, and flowers, in a dark variant and a light variant.

Marinah Chavez, F22, also went for a frog, this one on a lily-pad in a pond in front of the Holyoke Range mountains rendered in colored pencil.

**By Blaise Paine, F23**  
*Editor-in-chief*

Ashley Barrondo, F22, submitted a fall-themed design, with the Red Barn at dusk inscribed in a letter 'H', decorated by turning leaves and pumpkins.

The HampStore's yearly student design contest is now open for voting through October 22<sup>nd</sup>.

Henry Simpson, F23, went for humor, with a bold text design reading "THEY PUT ME IN A MOLDY MOD AND ALL I GOT WAS THIS SHIRT."

5 designs from 4 different student artists are competing to be sold on shirts in the HampStore.

Students can view the designs and vote for their favorite by scanning the QR code at right.



NEWS / CAMPUS

# New Leaf to hold 'Pesca de la Fortuna' benefit raffle

Event will benefit grassroots effort to create native plant lawns on campus.

**By Blaise Paine, F23**  
*Editor-in-chief*

Student environmental club New Leaf is hosting a fundraising event called Pesca de la Fortuna (Lucky Fishing) during Friends and Family Weekend.

build connections between new and old students.

Set for Sunday, October 20<sup>th</sup> at the Merrill Gazebo, attendees will be able to raffle for various items donated by the community on a sliding scale of \$1 to \$5 dollars.

Donations of items for the fundraiser are being collected at the Dakin SLC, Prescott Tavern, and Wellness Center. Questions about donations and the event itself can be directed to Zanzzy Rice-Reeves, F22 at zr22@hampshire.edu.

Proceeds from the event are intended for the student effort to create native plant lawns on campus, replacing the monoculture lawns that occupy much of the grounds. Started by Ike Rubin, F22, at the beginning of the semester, the project aims to support the local ecosystem and



Poster for the event as distributed on the Intranet

NEWS / FOOD

# 10 million pounds of pre-cooked meat products recalled for listeria contamination

Aldi, Target, Walmart, Trader Joe's, 7-Eleven among the affected stores.

in a variety of products carried in the following stores nationwide: Walmart, Meijer, Target, Aldi, Trader Joe's, 7-Eleven, Wegmans, Amazon Fresh, Kroger, Albertson's, Publix, H-E-B, Giant Eagle, and Save Mart.

**By Blaise Paine, F23**  
*Editor-in-chief*

Nearly 10 million pounds of pre-cooked chicken was recalled on October 9<sup>th</sup>, due to concerns of listeria contamination, according to an announcement from the U.S. Department of Agriculture.

Listeriosis is mild in most, but elderly, immuno-compromised, and pregnant individuals are at risk of serious illness.

The Food Safety and Inspection Service discovered *Listeria monocytogenes*, a bacteria that causes an infection called listeriosis, in products containing ready-to-eat poultry made by BrucePac, an Oklahoma based meat supplier. BrucePac products are used

Customers are advised to throw away or return any products listed in the recall notice issued by the USDA, accessible via the QR code below.



NEWS / THEATRE

## 24-Hour Play Festival to perform Saturday evening

The festival replaces the New Playwrights Festival, which was canceled on October 7<sup>th</sup>.

By Blaise Paine, F23  
Editor-in-chief

A 24-Hour Play Festival is set to begin at 7pm tonight, where participants will write new original play scripts overnight, rehearse, and then finally perform at 7pm on Saturday evening.

The event is organized by student Isaiah Woods, F21, after the New Playwrights Festival was canceled during a production meeting on October 7<sup>th</sup>. Woods had written a piece for the New Playwrights Festival, and as it became clear that the festival would not continue as originally planned due to time constraints, they proposed replacing it with a 24-hour play festival, but couldn't get sufficient buy-in from other participants.

Woods is now independently organizing the festival with the

support of the Hampshire College Theatre Board, giving them access to the Studio Stage space in Emily Dickinson Hall.

Students interested in writing and/or performing can simply show up in EDH at 7pm tonight.

Students interested in seeing the performance tomorrow can get free tickets at the QR code below.



**DISCLOSURE:**

The author of this article was involved in the New Playwrights Festival as a playwright and director.

NEWS / CAMPUS

## Mixed Nuts to hold swapmeet

By Blaise Paine, F23  
Editor-in-chief

On Friday, October 25<sup>th</sup> from 3pm to 5pm, Mixed Nuts will host a swapmeet at the Roos-Rohde House.

Students are invited to bring items to trade and barter with, but are also welcome to sell.

As table space is limited, students who would like to reserve a space to trade their things can RSVP via the QR code at right.



NEWS / CAMPUS

## Wellness Center starting social connection program

ProjectConnect, run by student facilitators, seeks to build connections between students.

By Blaise Paine, F23  
Editor-in-chief

The Wellness Center is beginning a social connection building program called ProjectConnect, which will meet once a week, run by student facilitators.

ProjectConnect is a program developed for workplaces and colleges to help develop connections between community members, especially in places where the community struggles with mental health, social isolation, and burnout.

The program was developed by Jessica Gifford, a graduate of Smith College with a master's degree in social work. The program has worked with other schools in the Five College Consortium, Amherst College and Smith College; as well as Tufts University, Brandeis University,

and Harvard University.

ProjectConnect claims that over the course of its six 1-hour sessions, participants "reduce loneliness [and] establish meaningful friendships." It has been used by over 75 campuses, and reports that 98% of participants would recommend the program to a friend, and 95% would participate in the program again.

Students interested in signing up can fill out the form at the QR code below.



NEWS / CAMPUS

## SJP holds walkout for Palestine

By Blaise Paine, F23  
Editor-in-chief

As part of National Students for Justice in Palestine's "Week of Rage" initiative, Hampshire College Students for Justice in Palestine held a walkout on October 7<sup>th</sup> in honor of Palestinian lives lost in the State of Israel's on-going genocide in Gaza and the West Bank.

Students in attendance gathered on the library lawn at 11:30am. Several organizers spoke, and various resources were taped up on the pillars outside the library entrance.

Attendees were invited to craft red paper poppies, a symbol called a "remembrance poppy," traditionally worn in Commonwealth nations to honor fallen military personal.

The symbol was inspired by the poem *In Flanders Fields* by John McCrae, and were first

used at the end of World War I to commemorate fallen soldiers, and have since been used in "Poppy Days" to raise funds for veterans, widows, orphans, and charities such as the Red Cross.

The walkout itself was met with a mixed response from students:

Some users on YikYak complained that the walkout felt performative, while others felt that while the walkout may not have accomplished a material goal, holding space for victims of genocide is valuable in-and-of-itself, particular when combined with material action.

Hampshire SJP is holding a yard sale on Saturday from 2pm to 6pm at Enfield mod 45, with all proceeds to benefit Palestine.

**AD**

# YARD SALE

# YARD SALE

**\$5 AND UNDER**

**CLOTHES, TRINKETS, AND FURNITURE**

**OCT. 19, 2-6 PM, ENFIELD MOD 45**

## ALL PROCEEDS TO PALESTINE

Taken out by Hampshire College Students for Justice in Palestine

# Editorial

**leapfrog**  
student newspaper

## NEWS / SUSTAINABILITY

### October News from Sustainable Hampshire

By Sustainable Hampshire  
*Syndicated newsletter*

Below are excerpts from Sustainable Hampshire's October newsletter.

View the full newsletter on our website by scanning the QR code at right.



### Spotlight on: Soil Carbon Research in Hampshire's Athletic Fields

James Sanner, the Assistant Director of Grounds and Land Management at Hampshire College, has been working on a project studying carbon sequestration in Hampshire's athletic fields. Sanner applied for and received a grant through the Massachusetts Executive Office of Energy



and Environmental Affairs' (EEEA) Healthy Soil Action Plan, and is now working in collaboration with Professors Jenny Van-Wyk and Juliet Johnston, as well as several student workers who have been processing soil samples.

The team began by taking baseline carbon measurements from the soil. The samples are then weighed, labeled, and then put in a furnace; carbon loss is identified through the difference between the weight before and after being burned. Sanner is now applying a variety of different treatments including a regular grass blend, a diversity mixture, aerifying, fertilization, compost, biochar and charged biochar, to assess the impact on the athletic field. The team will continue with another round of sampling in 12 months. Sanner also hopes to follow up this project with a look at carbon sequestration and biodiversity in wildflower meadows like the one in front of the Kern Center.

### New Resource: Campus Food Map

Sustainable Hampshire interns have created a new Campus Food Map, showing where you can find free, paid, and foraged food resources on campus. Find it on the Sustainable Hampshire website! From apple trees to CSA shares, this map will help you get to know the wide range of food sources available on campus. If you have a resource you'd like to share, contact emma24@hampshire.edu.

### New Leaf Invasives Mapping Project

New Leaf, an environmental student group on campus, is working on an invasive species mapping project. Focusing on three species—bittersweet, knotweed, and tree of heaven—New Leaf is collecting data from the Hampshire community about where these plants are found on campus. The group will then collaborate with Facilities & Grounds to remove them. If you're interested in getting involved, email Isaac Russel at iyr21@hampshire.edu.

edu.

Ecosystems have evolved over millennia to form an interwoven community of plants, animals, and fungi. Invasive species disrupt this balance, competing for space, sunlight, and other resources, and resulting in decreased biodiversity (U.S. Forest Service). Mapping them is an important first step towards removal, which will allow the ecosystem to begin healing from their impacts. **It's important to never try removing an invasive species yourself;** when done improperly it can lead to the plant spreading further.

### Let's Connect!

Follow us on Instagram:  
@sustainablehampshire.

Have thoughts or ideas on what you would like to see or learn about from us? Working on an environment-related project that you'd like to share with people? Tell us about it by emailing Ash Richardson-White at [asr23@hampshire.edu](mailto:asr23@hampshire.edu) or Emily Anderson at [emma24@hampshire.edu](mailto:emma24@hampshire.edu).

AD

## TELL THEM AUDITION



INSTA: C.J. MCNEIL

chm21@hampshire.edu



MONOLOGUES & PRODUCTION INFO

Taken out by Cherish McNeil, F21

AD

## Advertise here!

Students get free ads.

[hampshireleapfrog.org/advertising](http://hampshireleapfrog.org/advertising)

Taken out by Leapfrog Student Newspaper



## EDITORIAL / ACCESSIBILITY

## Stop postering on the Solar Canopy pillars

It's understandable, but it interferes with an accessibility feature.

**By Blaise Paine, F23**  
*Editor-in-chief*

Since mid-September 2023, the pillars that support the Solar Canopy have been wrapped in black-and-white vinyl bearing Hampshire's logo. But these vinyl wraps are not just for general campus beautification: they were a central demand of the Disabled Students Union.

The pillars themselves are a sort of off-beige, the same as the exterior walls of the surrounding Arts Village buildings, which nicely fades into the background, making the space feel more open. However, it's not actually a good thing for people to be unable to see pillars: they run into them. With so little contrast between the pillars and the buildings behind them, anyone with less-than perfect vision is at risk of not seeing them at all, and running headfirst into them.

The vinyl wraps, which the Disabled Student Union advocated for, make the pillars stand out against the background.

But the contrast doesn't work nearly as well when the pattern is interrupted by posters and graffiti.

Since the vinyl wraps were installed, the Disabled Stu-

dents Union and the Office of Accessibility Resources and Services have been fighting an unending battle against postering and graffiti. A month after the wraps were installed, an email asking students to refrain from graffitiing or postering on the pillars was sent out. The school committed to maintaining the pillars and removing graffiti and posters, but as the original purpose of the vinyl wraps fade into the back of the student body's collective memory, and new students come in without knowing its purpose, the postering and graffiti has only gotten worse.

Of course, the Solar Canopy is a high traffic area, and it's entirely reasonable that people want to poster there. Asking people to avoid postering on the pillars is not a long-term solution, it will always be a war of attrition. Realistically, the Solar Canopy needs designated notice boards like many other locations on campus have. High traffic areas elsewhere have notice boards, like the FPH breezeway, and the same could easily be done for the Solar Canopy.

But in the meantime, please avoid postering or graffitiing the pillars, and if you see posters on them, take them down. It might be inconvenient, but it's not as inconvenient as cracking your skull on a concrete pillar.

**DISCLOSURE:**

The author of this editorial is a member of the Disabled Students Union.

## COLUMN / ART

## Dear Hampshire Reader: Spooky Season

**By Malfoy Kimmel, F22**  
*Contributor*

In keeping with the Halloween festivities, I've assembled a reading list that'll make you want to curl up in bed and close your blinds. Any picks you'd want to see in a part two of a Halloween reading list? Any themes you'd like to see in further columns? Email me at mak22@hampshire.edu.

*Drive Your Plow Over the Bones of the Dead*

by Olga Tokarczuk

Translated from Polish by Antonia Lloyd-Jones, this whimsical yet dark thriller takes you into the mind of a recluse as she and her town reckon with a series of murders. Scores a 4/5 on Goodreads.

*The Changeling\**

by Victor LaVelle

Reminiscent of classic faerie cautionary tales, following a new father whose wife begins acting very peculiarly after the birth of their child. Scores a 3.8/5 on Goodreads.

*Annihilation*

by Jeff VanderMeer

The first book in the science-fiction Southern Reach trilogy, that confuses, scares, and forces you to confront your deepest fears head-on. Scores a 3.8/5 on Goodreads.

*The Z Word\**

by Lindsay King-Miller

A cheeky, queer take on the zombie apocalypse. Scores a 3.5/5 on Goodreads.

*We Have Always Lived in the Castle\**

by Shirley Jackson

A gothic horror classic from the master of getting under your skin. Scores a 3.9/5 on Goodreads.

*The Icarus Girl\**

by Helen Oyeyemi

Drawing on the uncanny and themes of doppelgangers, this debut novel will make your hair stand on end. Scores a 3.7/5 on Goodreads.

*Something Wicked This Way Comes*

by Ray Bradbury

Two young boys encounter a mysterious carnival that threatens to destroy their friendship and their town in this 1962 classic. Scores a 3.9/5 on Goodreads.

*The Left Right Game*

by Jack Anderson

Originally published online, this story follows a reporter as she plays the titular game with a hunter of the paranormal. Scores a 4/5 on Goodreads.

*My Heart is a Chainsaw\**

by Stephen Graham Jones

The first installment in the Indian Lake Trilogy picks apart the tropes of the slasher genre while remaining a veritable gorefest. Scores a 3.5/5 on Goodreads.

*Ring\**

by Kōji Suzuki

Translated by Glynne Walley and Robert B. Rohmer, this novel inspired the movie(s) of the same name and remains a horror staple. Scores a 3.8/5 on Goodreads.

*Future Home of the Living God\**

by Louis Erdrich

The horrors of this dystopian novel are all too relevant, focusing on themes like reproductive rights, evolution, and U.S. totalitarianism. Scores a 3.6/5 on Goodreads.

*The Night Circus*

by Erin Morgenstern

— A spooky, fantastical romance that follows magicians Celia and Marco, two members of Cirque des Rêves. Scores a 4/5 on Goodreads.

\*: To be completely transparent, I have not read these particular books yet, but I hope you will join me in adding them to your ever-growing reading list.

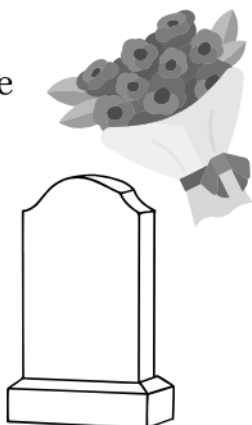
Happy reading!

**AD**

The crack outside of the  
Cole Science Center's  
**FUNERAL**

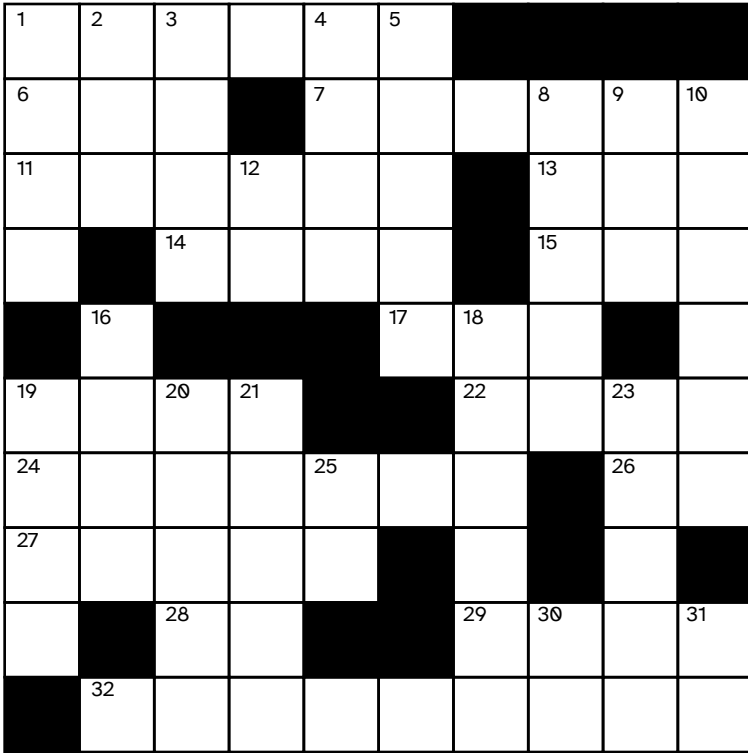
October 19th from 11:30 -  
12:30 outside of the Cole

Celebrating the life and  
death of the sidewalk  
crack outside of the Cole



Taken out by the Disabled Students Union

# Puzzles & More leapfrog student newspaper



Puzzle by Jamie Gill, F23

10/18/24 (No. 2)

**ACROSS**

- 1. An otherworldly shower.
- 6. \_\_\_ Lennox, American R&B singer-songwriter.
- 7. Shorthand for

- the "City of Brotherly Love".
- 11. A farm smell.
- 13. Affirmative.
- 14. Star Wars combat walker seen on Hoth.
- 15. Socioeco-

- conomic status, abbrev.
- 17. Tasmania abbrev.
- 19. Trip \_\_\_
- 22. Giant crack in the sidewalk spot.
- 24. Mount \_\_\_\_\_.

## Crossword

By Jamie Gill, F23  
Contributor

- 26. Boat paddle homophone.
  - 27. Space prefix.
  - 28. A sort of blox.
  - 29. Political sitcom.
  - 32. 45 degrees on a compass.
- DOWN**

- 19. Sick, Frail.
- 20. Somewhat old aesthetic.
- 21. Mistake.
- 23. Pluralized affection.
- 25. Executive Order acronym.
- 30. Video game developer.
- 31. Portugal abbrev.

- 1. Person Freddie Mercury didn't intend to make cry.
- 2. Large unit of time.
- 3. \_\_\_ Turner.
- 4. Hampshire department for athletics.
- 5. Other half of Link.
- 8. Comedy-drama main character Ted \_\_\_.
- 9. An ingredient found in some soaps.
- 10. \_\_\_-day.
- 12. Beehive state's abbrev.
- 16. Things students may tell when introducing themselves.
- 18. 20 Down-\_\_\_\_\_.

## ANSWER TO PREVIOUS PUZZLE



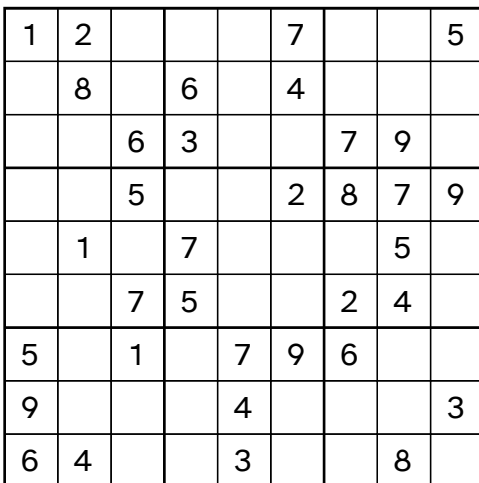
Puzzle by Alex Grosman, F22

10/4/24 (No. 1)

**CORRECTION:** The clue for 59-Down for this puzzle was incorrect, and should have been "The DC's old name."

## Sudoku

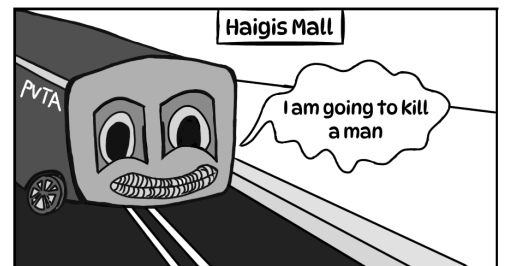
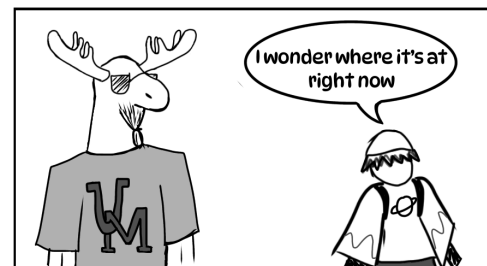
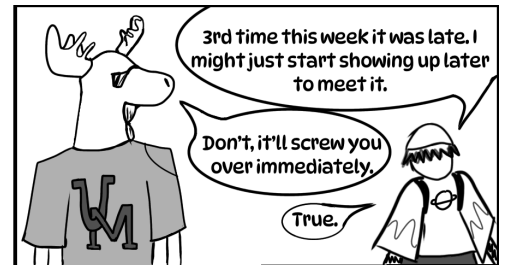
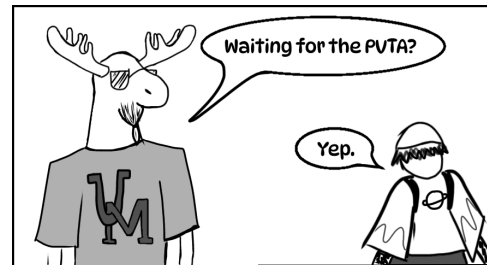
Fill the grid with digits such that each column, row, and 3x3 box contains each digit exactly once.



Puzzle by Blaise Paine, F23

10/18/24 (No. 2)

## Dirk St. Antique & Ulysses UMoose



by Ryan Nivus, F23

10/18/24 (No. 2)